

SYSTEM SIGN IN



<https://citi.research.ucf.edu>

Sign in using your NID and NID Password. Upon signing in for the first time using your NID and NID password you may be asked to link your previous account. If you do not see your previous training upon logging in, please contact the service desk at risservicedesk@ucf.edu or 407-823-5500.

TRAINING ENROLLMENT



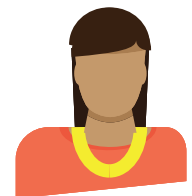
Training will be displayed under "University of Central Florida Courses". If you do not have any training courses you are able to select training by clicking on "Add a Course or Update Learner Groups". You will be required to answer several questions to determine which training you will need to complete.

COMPLETION REPORT



After finishing the training, you will be able to view your completion report on the main page of the user portal. To complete the training, users must pass with a minimum success rate of 80%. We recommend that you print out and keep a copy of your completion report for your records. The Completion Report is automatically sent to the appropriate compliance department.

CONTACTS



For any questions regarding training please, contact the appropriate department listed below.

Conflicts of Interest - coi@ucf.edu
Office of Animal Welfare - iacuc@ucf.edu
Institutional Review Board - irb@ucf.edu
Responsible Conduct of Research - rcr-ucf@ucf.edu
Export Control - exportcontrol@ucf.edu



risservicedesk@ucf.edu |



407.823.5500